

SB055 / SB056 – Drive Coupling

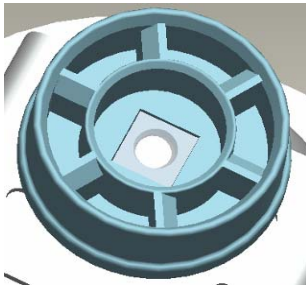
Due to the drive coupling coming off quite easily, or loosening during operation, a design modification has been made to the drive coupling. These apply from date code 8K31, and please note old and new versions are NOT interchangeable.

Changes.

Thread was added on the motor shaft (no impact on spares as the motor is not supplied as a spare part)

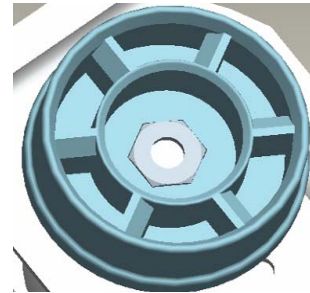
On the drive coupling itself, the foursquare nut has been replaced by a hexangular nut.

Before modification – prior to 8K31



Square nut

After modification – after 8K31



Hexagonal nut



KW711645



KW713042



KW712162



KW713043